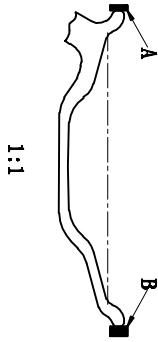


MARKING CONTENT ON REVERSE SIDE:
 PART NO. 28035260 22.5x8.25 15° DC DATE X X X X
 MAX LOAD 366KG MAX ED9878 HRS 167.5 EBA XXXX
 (ACCORDING TO CUSTOMER REQUIREMENTS,
 TYPICALS: SIX TIMES NEW ROMAN,
 THE DEPTH OF MARKS: 0.3MM)

◆ Dynamic Unbalance

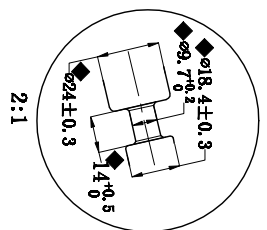
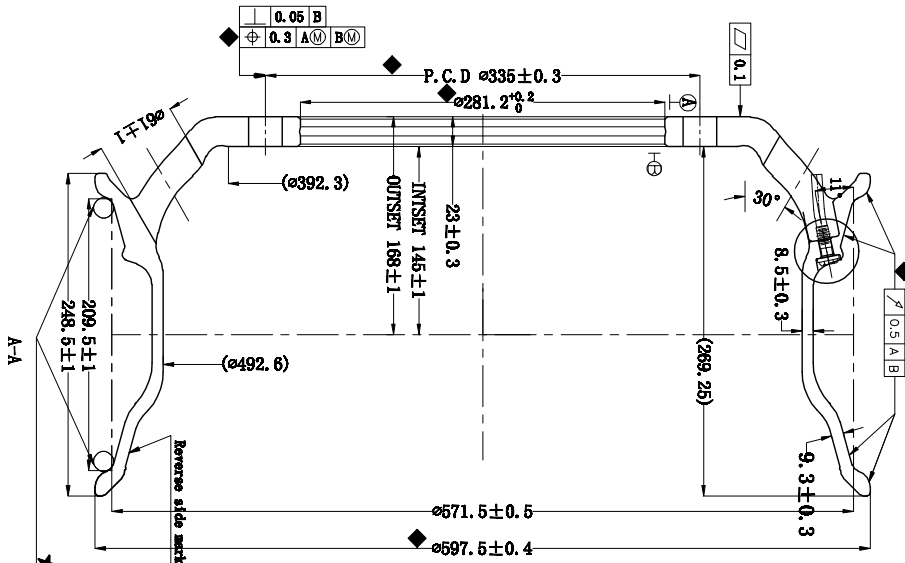
- 1、A ≤ 30G
- 2、B ≤ 30G
- 3、A+B ≤ 50G



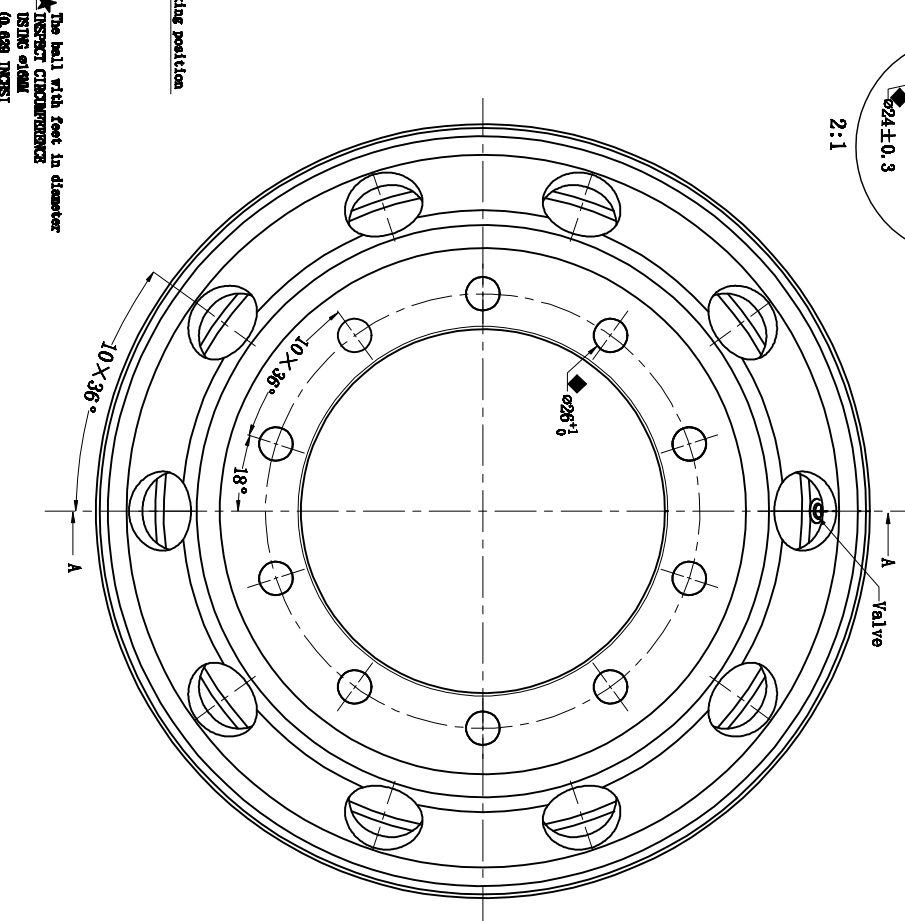
1:1

Technical notes:

- 1. Compliance with US Federal Motor Vehicle Safety No. 120
- ★ 2. Durability Test (SAE J267)
 - Cornering Fatigue Test
 - Loading Mode: 90°
 - Load: 2445 ± 87kg. m
 - Cycle: 300000
- ★ Radial Fatigue Test
 - Load: 10220 ± 346kg. m
 - Cycle: 100000
- 3. Tyre: 295/30R22. 5. radius: 0.503m
- 4. Valve balance testing standards: max: 1500g. cm
- 5. Valve: 70MS-07.
- ◆ 6. Valve nut torque: 80-125IN. LBS (8.95-14.64n. m)
- 7. Valve cap: 2-101
- 8. Two pieces nuts M2-1.5, torque: 62/69kg. m
- 9. Tolerance
 - Dimensional Tolerance ± 1
 - Angle Tolerance ± 1°
 - Radius Tolerance ± 1



2:1



★ The ball with feet in diameter
 INSPECT DIMENSION
 USING 61MM
 (0.630 INSET
 DISK TIRE PER TIRE AND
 RIM ASSOC SPECIFICATION

Changed the level	Place a few number	Changed notification	Changed content	Signature	Date

Important features	◆	Key Features	★
Design		Product platform	GTU13-01 - 22.5x8.25
Proofer/ver		ET: inset/outset:	145/168
Revision		Vehicle model	
Technology		Surface treatment	Material/polishing
Standardization		Material	6061-T6
Rectification		Proportion marks	
Date			
Drawing No.		28035260	
Revision		Weight (Theory)	
A/1	25.2Kg	Percentage	
A total of one		The first page	

Qingdao J&G